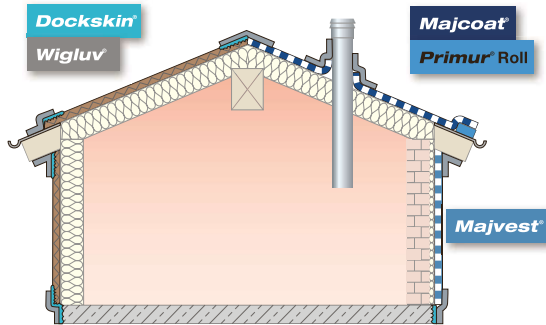


Making the building shell windtight

Use the following SIGA products for the reliable sealing of your windtight building shell:



- The windtight building shell is created by the permanently sealed roof underlay membrane and facade membrane.
- If the shell is not windtight, cold outside air can cool down the insulation.
- Furthermore, snow, rain, insects and wood pests can enter the building unhindered and damage it.
- For this reason, the building owner is well advised to ensure his building is equipped with a continuously sealed windtight layer.

All critical areas must be sealed carefully to be windtight, e.g.:

- Overlaps between breathable membrane and facade membrane
- Circular and angular penetrations (e.g. chimneys, pipes, joists and skylights)
- Joints of underlay boards
- Transfer areas between covering membranes and underlay boards
- Base-joints

The US perm rate of the roof underlay membranes and facade membranes is higher than that for vapor control layers so that the moisture does not collect underneath the membrane. Here the following rule applies: the inside US perm rate must be at least ten times lower than the outside US perm rate.

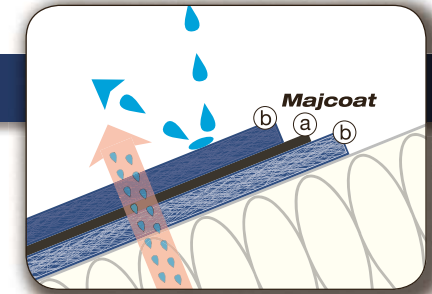
Major thermal requirements and a wide range of substrates require high-quality products which bond reliably and permanently. SIGA offers you a comprehensive system with products which are perfectly designed to work well with one another. This way you can easily prevent building damage, when products are applied correctly!



Find out more about windtightness at www.sigacover.com

Roof underlay membrane

Majcoat® the roof underlay membrane



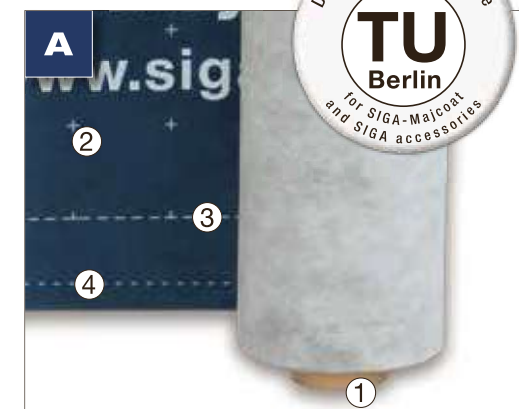
- ✓ **3-layer, sturdy and tear-proof no damage in construction phase**
- ✓ **functional layer (a) protected by 2 fleeces (b) driving rain-proof and durably moisture-diffusing**
- ✓ **imprinted cutting and bonding aid saves time**

Item no. 8710-150050
 Roll: width x length: 1.5 m x 50 m = 75 m²
 4.9 ft x 164 ft = 807 ft²
 Weight: 16 kg / 35.27 lb

3 layered, monolithic functional layer, reinforced on both sides with PP nonwoven, thickness 0.6 mm / 0.023"
 Weight per unit area: 190 g/m² / 0.62 oz/ft²
 C€, EN 13859-1 / EN 13859-2
 s_D value: 0.1 m
 34 US perms
 The Technical Data Sheets include ASTM testings. They are available on www.sigacover.com.

Atmospheric exposure: up to 4 months
 Secure against driving rain, waterproof: far above W1 according to EN 1928
 Fire behaviour: class E in accordance with EN 13501-1
 The roof pitch must be at least 10 °

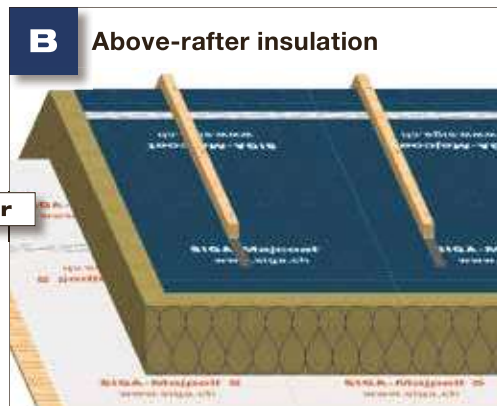
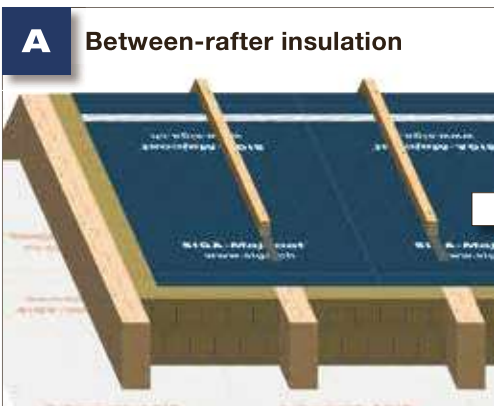
Tips and Tricks



- **Protruding roll core (1) protects Majcoat right up to the last inch**
- **Printed cutting (2), laying (3) and bonding aid (4) saves time**



Mounting



or

Suitable underlays for installation:
Supporting structure, cladding, underlays (laid flush), heat insulation of sufficient pressure resistance



- Apply Majcoat with the printed side facing you
- When necessary make a stress-relief loop in the membrane (see page 53)



- Secure the membrane in the overlap area using a stapler



- Lay the second membrane
- Overlap the membranes by approx. 4" and secure them in the bonding area with a stapler



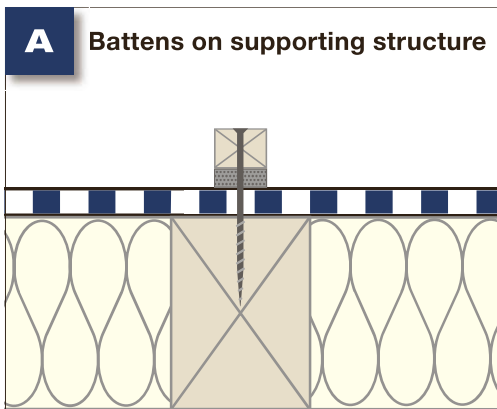
- Seal the membrane rainproof and windtight (see pages 53 – 59)
- When necessary seal overlaps with Wigluv 100 (see page 53)



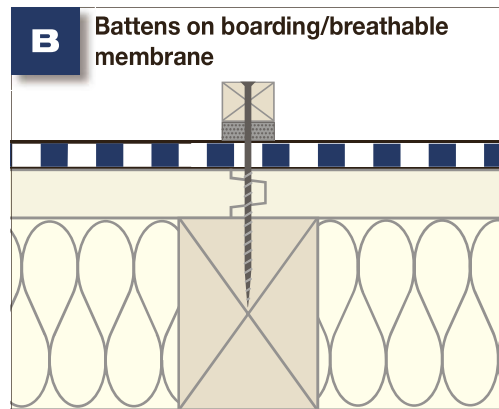
- After sealing:**
- Stick the nail sealing tape to the counter batten and separate the backing strip (see page 60)



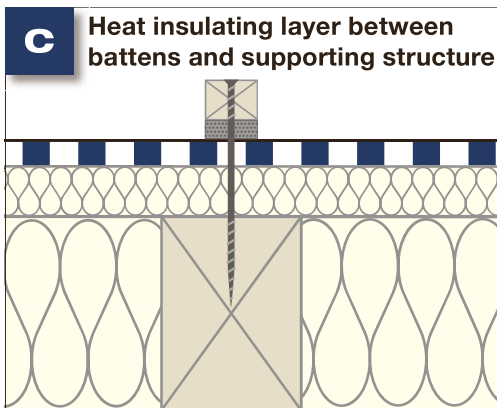
- Finally mount the breathable membrane by screwing or nailing the counter battens to a solid support (see page 52)



- Mount counter battens in the direction of the supporting structure - directly on the supporting structure, e. g. rafters
- **Important:** counter battens must rest on the underlay with their complete surface



- Mount counter battens directly on boarding or underlays which have been laid flush



- Mount counter battens using suitable screws (e. g. with full thread, under head thread)
- The heat insulation must feature sufficient pressure resistance
- If wood-based softboards are used these must be declared as underlay boards
- **Important:** water carrying layer must be at the same height at all points

Wigluv® 60 single-sided high-performance tape for overlaps, penetrations and windows



- ✓ high adhesive strength at high and low temperatures
reliable, no building damage
- ✓ vapor permeable > 1.7 US perms
prevents condensation build-up
- ✓ driving rain-proof and impermeable to water
permanent protection for roof and facade

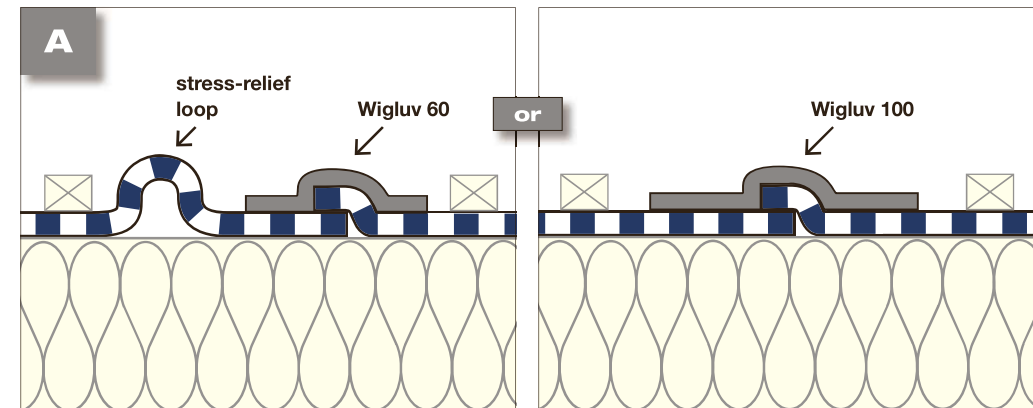
Item no. 7510-6040, Box: 10 rolls,
roll: width x length: 60 mm x 40 m / 2.4" x 131 ft
Vapor permeable special PO film (> 1.7 US perms),
hand-tearable, elastic, impermeable to water,
UV-stable (12 months atmospheric exposure)

The bond must not be under standing water.

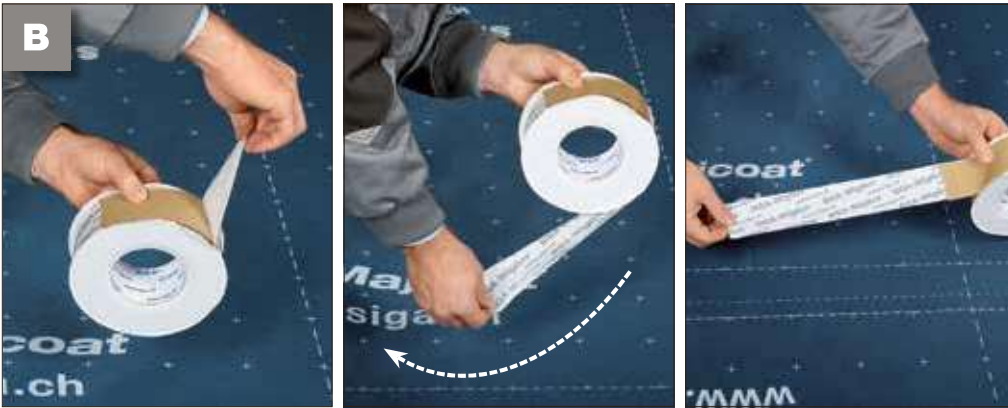
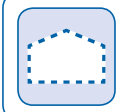
Europ. Patent 1847577



Tips and Tricks



- Membranes show different expansion and shrinkage characteristics
- **Make a stress-relief loop in the membrane** or seal overlaps with **Wigluv 100**, if:
 - membrane width > 4.9 ft or
 - the counter battens do not rest on the solid underlay with their complete surface or
 - the membrane is laid vertically or fully covers a pressure-resistant heat insulation



- Release Wigluv from its backing strip
- Unroll a turn of Wigluv so that the backing strip is at the top
- **Advantage:** backing strip separates automatically on unrolling

Overlap



- Align Wigluv centrally along the overlap and secure in place
- Bond without tension or wrinkles and press on firmly
- The printed bonding aid saves time



Tip:
For making the stress-relief loop refer to page 53

How it should look:

- The overlap is permanently sealed to make it windtight with Wigluv 60

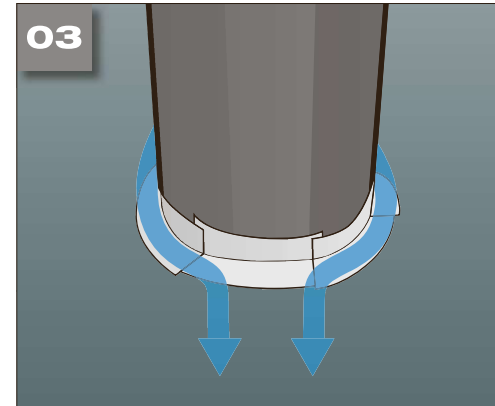
Penetration



- Guide the membrane precisely around the circular penetration
- **Note: start sealing at the lowest point!** Provides extra protection against water penetration



- Fix Wigluv half on the circular penetration then half on the membrane. Press down firmly
- Apply subsequent pieces in overlapping layers

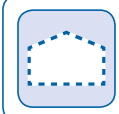


- Done, sealed in layers
- Water will reliably run off



How it should look:

- Circular penetration sealed windtightly in layers with Wigluv 60



Skylight



- Make a Y-cut in the membrane to the size of the installation frame (see cutting pattern)
- Fold back the sides



- Fit the skylight into the mounting frame
- Screw it on
- **Read and observe the instruction manual supplied by the skylight manufacturer!**



- Secure the membrane to installation and skylight frame on all sides



- Cut off approximately 1" in below the top of the skylight frame



- Seal the corners windtight with short pieces
- **Note: start sealing from the lowest point!** Provides extra protection against water penetration



- Seal the membrane all round the skylight frame so that it is windtight



- How it should look:**
- Skylight sealed windtightly with Wigluv 60
 - Provide the penetration with extra protection with a deflection plate



SIGA-house-tight

Roof underlay membrane

Primur® Roll high-performance adhesive for stucco

Inside and outside



- ✓ extremely high adhesive strength without drying time
indoor and outdoor joints can be subjected to loads immediately
- ✓ apply Primur Roll before mounting the vapor control layer
clean and 50 % less working time
- ✓ constantly 4 mm thick and elastic
reliably absorbs structural movements

Item no. 3540-1208
 Box: 10 rolls
 Roll: width x thickness x length:
 12 mm x 4 mm x 8 m / 0.47" x 0.16" x 26 ft

The bond must not be under standing water.
 Primur can be painted over.
 Keep out of reach of children!

Stucco



Example at a dormer:

- **Clean** the substrate and roof underlay membrane
- Apply Primur, align it and press it down
- Make a stress-relief loop in the membrane, press the sheeting down **firmly** without tension or wrinkles
- Cut off any excess sheeting



Example at a chimney:

For the Inside,
see page 19

Windtightness

SIGA®

Wigluv® 100 & 150 high-performance tape for bonds, transfers and penetrations

Dockskin®

the high performance primer for sealing sandy, fibrous substrates



- ✓ high adhesive strength at high and low temperatures
reliable, no building damage
- ✓ vapor permeable > 1.7 US perms
prevents condensation build-up
- ✓ slit backing strip
simple and quick to apply

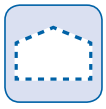
	Dockskin	Wigluv 100	Wigluv 150
Item no.:	5920	7510-10025	7510-15025
Box:	-	6 rolls	4 rolls
Container/roll:	4 kg / 8.8 lb	100 mm x 25 m / 3.9" x 82 ft	150 mm x 25 m / 5.9" x 82 ft

Stucco



Example at a chimney:

- Bond the membrane with Dockskin and Wigluv 100 or Wigluv 150 to the masonry or plaster



SIGA-house-tight

Roof underlay membrane

Nail sealing tape II

for permanently rainproof sealing when installing battens



- ✓ extremely adhesive on both sides
driving rain-proof, suitable for makeshift coverage
- ✓ pre-installation on counter batten
simple and quick application
- ✓ 4 mm thick special foam
reliable, no building damage

Item no. 2005-50430

Roll: width x thickness x length: 50 mm x 4 mm x 30 m / 2" x 0.16" x 98 ft
For roof pitches > 10°. Not recommended for PVC membranes.



Tips and Tricks



- Ideally with breathable membrane SIGA-Majcoat

New
extremely sticky
on both sides

Windtightness



Mounting



- Stick the nail sealing tape to the counter batten



- Use backing strip for simple and quick application
- Fold back the starting part of the backing strip
- Backing strip is handy and can be removed quickly later



- Align the counter batten with the backing strip folded back on the breathable membrane



- Separate the backing strip and press the counter batten down



05



- Finally mount the breathable membrane by screwing or nailing the counter battens to a solid support (see page 52)