



HECO-WR Special full threaded screw

Product information

- Very high performance
- Insertion parallel to the grain possible too
- No decline of load bearing capacity from 90° to 45° relative to the grain
- Installation without pre-drilling
- Low splitting tendency: small edge and intervening spacing
- Reduction of time and costs
- Wide range of applications
- High corrosion resistance (Durocoat)
- Approved and monitored product (CE-marking)



More power in structural timberwork

Countersunk head

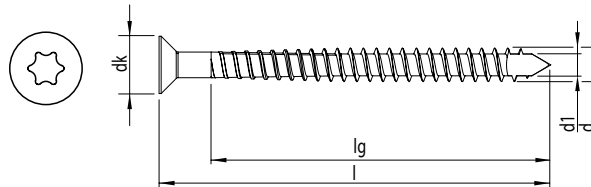
Surface Durocoat

Full thread

Half tip

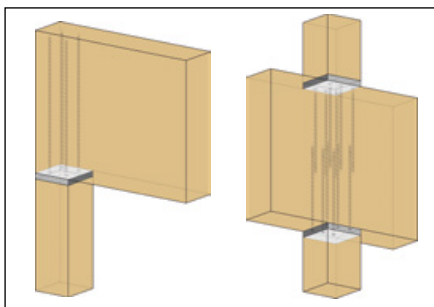


Type:	HECO-WR special full threaded screw, countersunk head	
Recess:	T-Drive	
Thread:	full thread	
Material:	carbon steel	
Surface:	Durocoat CHROME (VI) FREE +	Color code HECO-label

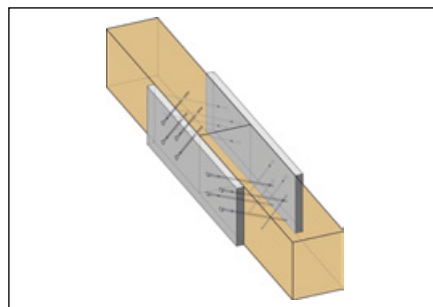


Size d x l [mm]	Thread length lg [mm]	Head diameter dk [mm]	Recess	ETA	Article No.	Pieces per package	Packaging type	Pieces per outer carton
13,0 ⊛	400	380	22	T-50	• 53334	25	VARIANTA	50
	500	480	22	T-50	• 53336	25	VARIANTA	50
	600	580	22	T-50	• 53337	25	VARIANTA	-
	700	680	22	T-50	• 53338	25	VARIANTA	-
	800	780	22	T-50	• 53339	25	VARIANTA	-
	900	880	22	T-50	• 53340	25	VARIANTA	-
	1000	980	22	T-50	• 53341	25	VARIANTA	-

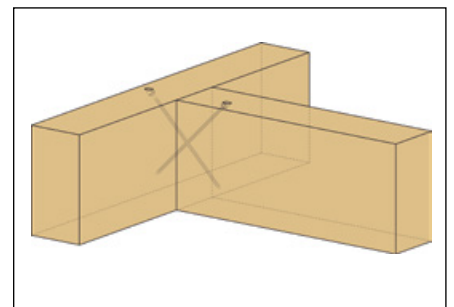
Application examples



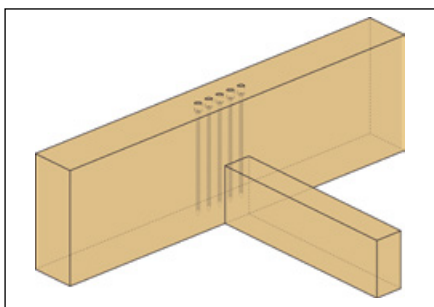
Support reinforcement



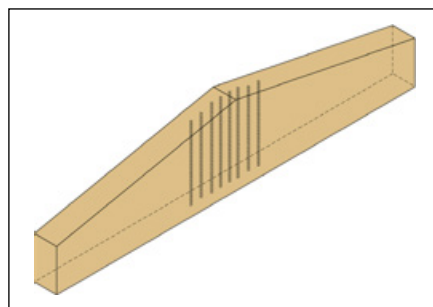
Steel plates in general



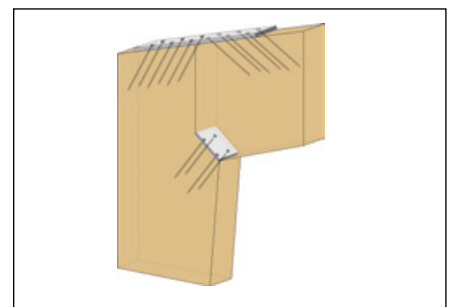
Main/secondary beams



Lateral tension reinforcement



Double-pitch roofs



Frame corners