

Quick, easy and precise to the **best result**

All Info, technical data, assembly videos and downloads:
Always up to date at: www.pitzl-connectors.com.

Benefit from our expert advice at any time by calling:
+49 (0) 8703 9346-0 or simply send us an e-mail at
info@pitzl-connectors.com.

The Pitzl **wall support**

Simple handling, practical, effective



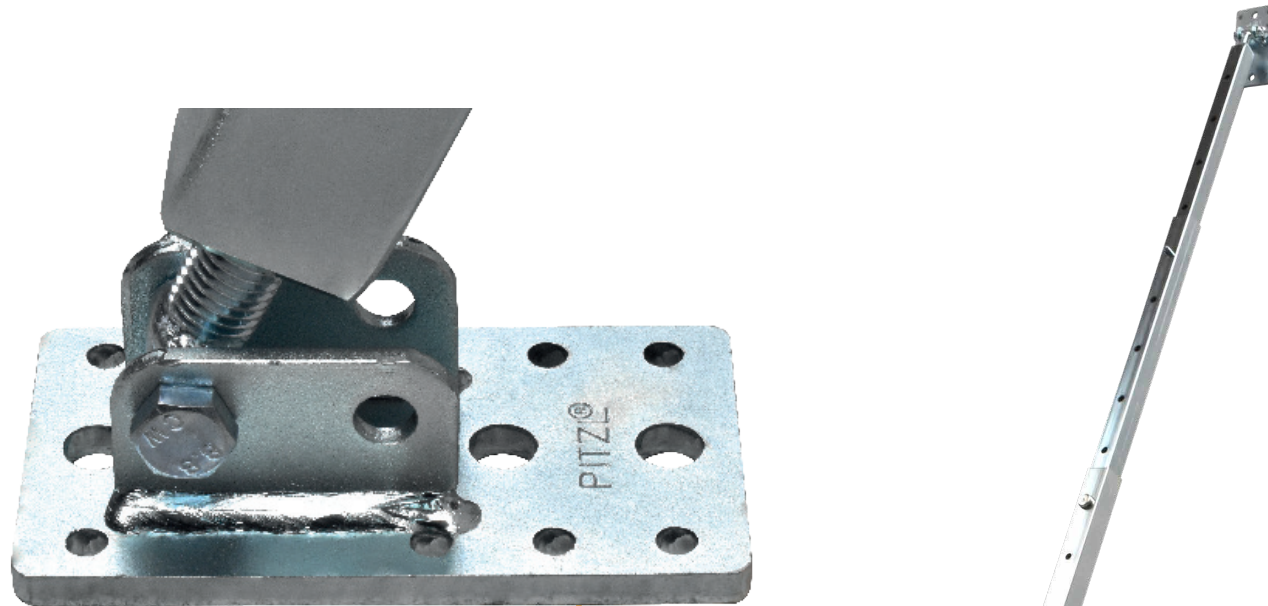
- Post supports
- Wood connectors
- Balcony-/fence post
- Tools
- Connecting means
- Sound isolation

- Post supports
- Wood connectors
- Balcony-/fence post
- Tools
- Connecting means
- Sound isolation

The new wall support

Item no. 55650.1000 | 3-piece | Adjustment range 1600-4200 mm
 Weight 12,5 kg | Fine adjustment via left/right thread M20 | galvanized

Pitzl wall support - for easy and safe assembly of wall elements.
 Twice telescopically adjustable from 1.60m - 4.20m.
 The wall support offers maximum, temporary support.



Due to the left/right thread system, there is a possibility of precise adjustment of the wooden elements on the construction site.



Additional lever for fine adjustment.



Subsequent connection is simplified by magnetic bolts.

Variable spacer

Item no. 55650.1100
 Length 1300 - 1970 mm | adjustable by ratchet | incl. wall plate

Used to align the wall elements on the lower fastening level.

| Item number: | adjustment range: | pressure load: (max.) |
|--|-------------------|--------------------------|
| 55650.1000 Wall support | 1600mm-4200mm | 18,7kN |
| 55650.0100 Wall support with variable spacer | 1600mm-4200mm | 187,kN |
| 55650.1100 Variable spacer | 1300mm-1970mm | |
| 55650.2000 Lever for wall support | | |